



I'll keep fighting cancer for

Your Treatment Guide

INLYTA® (axitinib) is a prescription medicine used to treat kidney cancer that has spread or cannot be removed by surgery (advanced renal cell carcinoma or RCC) when 1 prior drug treatment regimen for your RCC has not worked.

It is not known if INLYTA is safe and effective in children.

Please see Important Safety Information on pages 8 to 12. Click for the full [Prescribing Information](#) and [Patient Information](#) or visit [INLYTA.com](#).

 **Inlyta**®
axitinib
1mg and 5mg tablets

Everyone Has a THIS

▶ **THIS IS YOUR REASON TO FIGHT.**

It's what keeps you strong. It's how you make the most of today and why you keep fighting for tomorrow, no matter what.

Whatever THIS is for you, INLYTA® (axitinib) can help you fight for it.



What You Will Find in This Guide

If you or someone you care about has been prescribed INLYTA® (axitinib), this guide can help you learn more about it. Inside, you'll find the following information:

About INLYTA

Get helpful information about INLYTA, including how INLYTA can help you, clinical trial results, and how INLYTA works.

4

Important Safety Information

Read about the risks and possible side effects of INLYTA.

8

Taking INLYTA

Review instructions on how to take and what to avoid while taking INLYTA.

13

Tips to Help Manage Certain Side Effects

Read about some of the common side effects of INLYTA, ways you may be able to manage them, and healthy choices you can make while taking INLYTA.

15

Getting INLYTA

Find information on how to get INLYTA and how to get financial support, including the Pfizer Oncology Together™ Co-Pay Savings Card.

20

Support & Resources

Learn about where to find additional support when you need it.

23

Treatment Checklist

Stay organized while taking INLYTA by keeping all of your important information in one convenient place.

25

About INLYTA[®] (axitinib)

What is INLYTA?

INLYTA is a prescription medicine used to treat kidney cancer that has spread or cannot be removed by surgery (advanced renal cell carcinoma or RCC) when 1 prior drug treatment regimen for your RCC has not worked. INLYTA was approved by the US Food and Drug Administration (FDA) on January 27, 2012.



About INLYTA[®] (axitinib) (cont'd)

INLYTA clinical trial results

In a head-to-head clinical trial, researchers studied progression-free survival (PFS) in 361 patients taking INLYTA versus 362 patients taking Nexavar[®] (sorafenib). Progression-free survival is the length of time during and after cancer treatment that a patient lives without the disease worsening. This is one way to check how effective the treatment is. The study showed that:

43%

INLYTA **extended median PFS by 43%** compared to Nexavar

– Patients taking INLYTA experienced a median PFS of 6.7 months compared with 4.7 months for those taking Nexavar. That's a 2-month increase in median PFS

33%

INLYTA also **decreased the overall risk of disease progression by 33%** compared to Nexavar

– Disease progression includes tumor growth, tumor spread, or death

INLYTA is not a cure. The data represent an average, and not all patients will experience the same results.

Important Safety Information

INLYTA may cause serious side effects, including high blood pressure (hypertension), blood clots in your veins or arteries (sometimes leading to death), bleeding (sometimes leading to death), heart failure (sometimes leading to death), a tear (perforation) in your stomach or intestinal wall (sometimes leading to death), thyroid gland problems, risk of wound healing problems, reversible posterior leukoencephalopathy syndrome (RPLS), protein in your urine, and liver problems.

About INLYTA[®] (axitinib) (cont'd)

2x

INLYTA **reduced tumor size in twice as many patients** compared with Nexavar (Overall response rate)

- 70 of 361 patients taking INLYTA saw their tumors shrink compared to 34 of 362 patients taking Nexavar. This includes patients whose tumors shrank 30% or more and whose response to treatment lasted at least 4 weeks

Along with progression-free survival, this study also measured **overall survival (OS)**. This is the total time patients on each medicine remained alive after starting treatment. There was no significant difference in overall survival between the patients taking INLYTA and the patients taking Nexavar.

INLYTA is not a cure. The data represent an average, and not all patients will experience the same results.

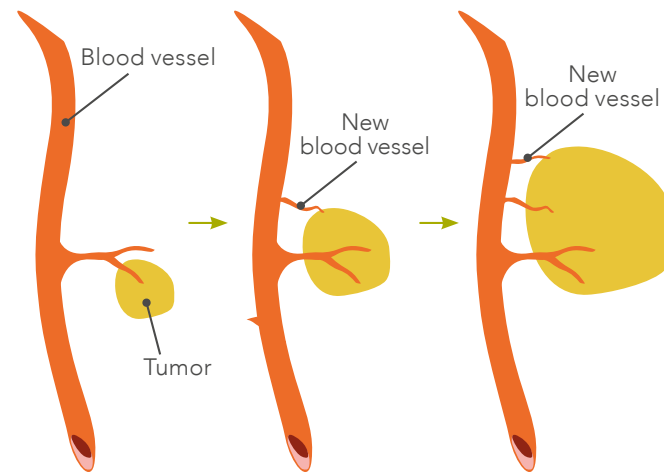
Nexavar is a registered trademark of Bayer Pharmaceuticals Corporation.

About INLYTA® (axitinib) (cont'd)

How INLYTA helps fight tumors

In order for cancer cells to spread, they need a constant supply of oxygen and nutrients. They get these from blood vessels. When tumors reach a certain size, they need new blood vessels to keep growing.

Animal and laboratory studies suggest that INLYTA prevents new blood vessels from forming. It is believed that this may help stop tumors from growing and cancer from spreading.



Important Safety Information

Women should not take INLYTA if they are pregnant, plan to become pregnant, are able to become pregnant, are breastfeeding, or plan to breastfeed. Taking INLYTA during pregnancy can harm your unborn baby. Both men and women taking INLYTA should use effective birth control during treatment and for at least 1 week after your last dose of INLYTA. Talk to your healthcare provider about birth control methods that you can use to prevent pregnancy during this time.

Important Safety Information

Review important safety information prior to taking INLYTA® (axitinib)

When starting treatment with INLYTA, it's important that you review the safety information in this section. You will find information you should share with your healthcare provider before taking INLYTA. You will also see a list of the risks and possible side effects associated with INLYTA.

Important Safety Information

Before taking INLYTA, tell your healthcare provider about all of your medical conditions, including if you:

- have high blood pressure
- have thyroid problems
- have liver problems
- have a history of blood clots in your veins or arteries (types of blood vessels), including stroke, heart attack, or change in vision
- have any bleeding problems
- have a history of heart problems, including heart failure
- have an unhealed wound
- plan to have surgery or have had a recent surgery. You should stop taking INLYTA for at least 2 days before planned surgery

For females, tell your healthcare provider if you:

- are pregnant or plan to become pregnant. Taking INLYTA during pregnancy can harm your unborn baby. You should not become pregnant during treatment with INLYTA.
- are able to become pregnant. You should have a pregnancy test before you start treatment with INLYTA. Use effective birth control during treatment and for 1 week after your last dose of INLYTA. Talk to your healthcare provider about birth control methods that you can use to prevent pregnancy during this time.
- are breastfeeding or plan to breastfeed. It is not known if INLYTA passes into your breast milk. Do not breastfeed during treatment and for 2 weeks after your last dose of INLYTA.

For males with female partners who are able to become pregnant:

- use effective birth control during treatment and for 1 week after your last dose of INLYTA.
- if your female partner becomes pregnant during your treatment with INLYTA, tell your healthcare provider right away.

(Continues on next page)

Important Safety Information (cont'd)

INLYTA may cause **fertility problems** in males and females, which may affect your ability to have a child. Talk to your healthcare provider if this is a concern for you.

Tell your healthcare provider about all the medicines you take, including prescription and over-the-counter medicines, vitamins, and herbal supplements. INLYTA and certain other medicines can affect each other causing serious side effects.

Talk with your healthcare provider before you start taking any new medicine. Know the medicines you take. Keep a list of them to show your healthcare provider and pharmacist when you get a new medicine.

Do not drink grapefruit juice or eat grapefruit. Grapefruit may increase the amount of INLYTA in your blood.

INLYTA may cause serious side effects, including:

- **High blood pressure (hypertension). High blood pressure is common with INLYTA and may sometimes be severe.** Your healthcare provider should check your blood pressure regularly during treatment with INLYTA. If you develop blood pressure problems, your healthcare provider may prescribe medicine to treat your high blood pressure, lower your dose, or stop your treatment with INLYTA
- **Blood clots in your veins or arteries.** INLYTA can cause blood clots which can be serious, and sometimes lead to death. Get emergency help and call your healthcare provider if you get any of the following symptoms:
 - o chest pain or pressure
 - o pain in your arms, back, neck or jaw
 - o shortness of breath
 - o numbness or weakness on one side of your body
 - o trouble talking
 - o headache
 - o vision changes

(Continues on next page)

Important Safety Information (cont'd)

- **Bleeding.** INLYTA® (axitinib) can cause bleeding which can be serious, and sometimes lead to death. Call your healthcare provider right away or get medical help if you develop any of the following signs or symptoms:
 - o unexpected bleeding or bleeding that lasts a long time, such as:
 - unusual bleeding from the gums
 - menstrual bleeding or vaginal bleeding that is heavier than normal
 - bleeding that is severe or you cannot control
 - pink or brown urine
 - red or black stools (looks like tar)
 - bruises that happen without a known cause or get larger
 - cough up blood or blood clots
 - vomit blood or your vomit looks like “coffee grounds”
 - o unexpected pain, swelling, or joint pain
 - o headaches, feeling dizzy or weak
- **Heart failure.** Your healthcare provider should check you for signs or symptoms of heart failure regularly during treatment with INLYTA. Heart failure can be serious and can sometimes lead to death. Tell your healthcare provider if you have any of the following symptoms during your treatment with INLYTA:
 - o tiredness
 - o swelling of your stomach-area (abdomen), legs or ankles
 - o shortness of breath
 - o protruding neck veins
- **Tear in your stomach or intestinal wall (perforation).** A tear in your stomach or intestinal wall can be serious and can sometimes lead to death. Get medical help right away if you get the following symptoms:
 - o severe stomach-area (abdominal) pain or stomach-area pain that does not go away
 - o vomit blood
 - o red or black stools

(Continues on next page)

Important Safety Information (cont'd)

- **Thyroid gland problems.** Your healthcare provider should do blood tests to check your thyroid gland function before and during your treatment with INLYTA. Tell your healthcare provider if you have any of the following symptoms during your treatment with INLYTA:
 - o tiredness that worsens or that does not go away
 - o feeling hot or cold
 - o your voice deepens
 - o weight gain or weight loss
 - o hair loss
 - o muscle cramps and aches
- **Risk of wound healing problems.** Wounds may not heal properly during INLYTA treatment. Tell your healthcare provider if you plan to have any surgery before starting or during treatment with INLYTA.
 - o You should stop taking INLYTA at least 2 days before planned surgery
 - o Your healthcare provider should tell you when you may start taking INLYTA again after surgery
- **Reversible Posterior Leukoencephalopathy Syndrome (RPLS).** A condition called reversible posterior leukoencephalopathy syndrome (RPLS) can happen during treatment with INLYTA. Call your healthcare provider right away if you get:
 - o headache
 - o seizures
 - o weakness
 - o confusion
 - o high blood pressure
 - o blindness or change in vision
 - o problems thinking
- **Protein in your urine.** Your healthcare provider should check your urine for protein before and during your treatment with INLYTA. If you develop protein in your urine, your healthcare provider may decrease your dose of INLYTA or stop your treatment.

(Continues on next page)

Important Safety Information (cont'd)

- **Liver problems.** Your healthcare provider will do blood tests before and during your treatment with INLYTA[®] (axitinib). Your healthcare provider may delay or stop your treatment with INLYTA if you develop severe liver problems.

Tell your healthcare provider right away if you have any of the following symptoms:

- o yellowing of your skin or the whites of your eyes
- o severe nausea or vomiting
- o pain on the right side of your stomach area (abdomen)
- o dark urine (tea colored)
- o bleeding or bruising more easily than normal

The most common side effects of INLYTA include:

- diarrhea
- high blood pressure
- feeling tired or weak
- decreased appetite
- nausea
- hoarseness
- rash, redness, itching or peeling of your skin on your hands and feet
- decreased weight
- vomiting
- constipation

These are not all of the possible side effects of INLYTA. Call your doctor for medical advice about side effects.

You are encouraged to report negative side effects of prescription drugs to the FDA.

Visit www.fda.gov/medwatch or call [1-800-FDA-1088](tel:1-800-FDA-1088).

Taking INLYTA[®] (axitinib)

Indication

INLYTA is a prescription medicine used to treat kidney cancer that has spread or cannot be removed by surgery (advanced renal cell carcinoma or RCC) when 1 prior drug treatment regimen for your RCC has not worked.

It is not known if INLYTA is safe and effective in children.



Images are not actual size.

How to take INLYTA

INLYTA comes in 1-mg and 5-mg tablets. Your healthcare provider will tell you which tablets you should take.

- Take INLYTA exactly as prescribed by your healthcare provider
- Your healthcare provider may change your dose if needed
- INLYTA can be taken with or without food
- Take INLYTA 2 times a day approximately 12 hours apart
- Swallow INLYTA tablets whole with a glass of water
- Your healthcare provider should check your blood pressure regularly during treatment with INLYTA
- If you vomit or miss a dose of INLYTA, take your next dose at your regular time. Do not take 2 doses at the same time
- If you take too much INLYTA, call your healthcare provider or go to the nearest hospital emergency room right away

Taking INLYTA[®] (axitinib) (cont'd)

What should I avoid while taking INLYTA?



Do not drink grapefruit juice or eat grapefruit. These may increase the amount of INLYTA in your blood.



Patients taking INLYTA should avoid St. John's wort. It may reduce the amount of INLYTA in your blood.

Helpful reminders for taking each dose of INLYTA

- Make medicine a part of your daily routine
- Use a weekly or monthly pill organizer
- Plan ahead
- Place your pill bottle in plain sight
- Always carry an extra dose with you
- Use a calendar
- Use a journal to track your medicine and when it's time to take it
- Ask for a reminder from your caregiver or care team

Tips to Help Manage Certain Side Effects

The tips in this section are based on published general guidelines for managing certain side effects that are common among patients with advanced RCC or other cancers. Not all side effects are manageable. Dose interruptions and/or reductions may be needed during treatment with INLYTA® (axitinib). Be sure to pay attention to all your side effects. They can be important signs that let you and your healthcare provider know what is happening in your body.

Before starting INLYTA, tell your healthcare provider how you are feeling and about any side effects you have had from other medications and treatments. As you start taking INLYTA, let your healthcare provider know if you notice any side effects or a change in how you feel. Also tell your healthcare provider if you notice any side effects that are not listed in this guide.

In this section, you'll find tips to help manage the following common side effects:

- High blood pressure
- Diarrhea
- Tiredness or feeling weak
- Decreased appetite or weight
- Nausea or vomiting
- Hoarseness
- Constipation
- Skin conditions



High blood pressure

INLYTA may cause your blood pressure to rise. In the clinical trial, hypertension occurred as early as 4 days into treatment. On average, this increase was seen within the first month of treatment.

Your healthcare provider should check your blood pressure regularly while you are being treated with INLYTA. If you develop blood pressure problems, your healthcare provider may prescribe medicine to treat your high blood pressure, lower your dose, or stop your treatment with INLYTA. Tell your healthcare provider if you have high blood pressure or a history of heart disease.

If you have high blood pressure, your healthcare provider's recommendations may include:

- Monitoring severe headaches, shortness of breath, or nosebleeds
- Exercising regularly, controlling your weight, and limiting alcohol and sodium consumption

If you are already being treated for high blood pressure, your healthcare provider may change your blood pressure medicine when you start taking INLYTA. Your healthcare provider may also ask you to track your blood pressure regularly. Follow the advice of your healthcare provider—talk to them if you have any questions or concerns.

Tips to Help Manage Certain Side Effects (cont'd)



Diarrhea

Diarrhea is defined as 3 or more loose or watery stools/bowel movements in 1 day. If you have these symptoms, call your healthcare provider. It is important for you and your healthcare provider to try to manage diarrhea as soon as it begins.

If you experience diarrhea, your healthcare provider's recommendations may include:

- Trying yogurt containing probiotics
- Eating small, frequent meals and foods containing soluble fiber
- Avoiding spicy foods, fatty foods, caffeine, and fruit
- Drinking fluids, such as water, diluted cranberry juice, or broth

Ask your healthcare provider if you can be treated with over-the-counter medications or prescriptions.



Tiredness or feeling weak

While you are taking INLYTA® (axitinib), you may feel tired or weak. Call your healthcare provider if you have these symptoms.

If tiredness or feeling weak is a recurring problem, your healthcare provider's recommendations may include:

- Taking short naps and breaks instead of long ones
- Eating well and drinking plenty of fluids
- Staying as active as possible
- Trying to maintain normal work and social schedules

Ask your healthcare provider if there are over-the-counter or prescription medications that may help you manage your condition.

Tips to Help Manage Certain Side Effects (cont'd)



Decreased appetite or weight

During treatment, you may have less desire to eat. But maintaining good nutrition and a healthy weight are important to your overall health. Protein and calories are especially vital to someone with cancer.

If you have decreased appetite, you can discuss the following diet ideas with your healthcare provider:

- Eating several small meals a day, including nutritious snacks that are high in calories and protein
- Drinking fluids between meals rather than filling up with beverages during meals
- Flavoring foods with herbs, sugar, or sauces to maximize taste
- If taste changes cause you to eat less, try cold or frozen foods to minimize taste
- Consulting with a registered dietitian (RD) for more ideas

Ask your healthcare provider if there are over-the-counter or prescription medicines that may help you manage your condition.



Nausea or vomiting

It is best to call your healthcare provider at the first sign of nausea or vomiting. This is especially important if these symptoms keep you from taking your oral medications or keeping them down. Your healthcare provider may prescribe a medicine for these symptoms.

If you experience nausea or vomiting, your healthcare provider's recommendations may include:

- Eating smaller, more frequent meals
- Avoiding fatty, fried, spicy, or highly sweet foods
- Eating bland foods at room temperature and drinking clear liquids

If you vomit, start with small amounts of water, broth, or other clear liquids when you are ready to eat again. If that stays down, then try soft foods. Some examples include gelatin, plain cornstarch pudding, yogurt, strained soup, or strained cooked cereal. Slowly work up to eating solid food. Make sure that you do not eat any food that you are allergic to.

Tips to Help Manage Certain Side Effects (cont'd)



Hoarseness

Also called dysphonia (dis-FONE-ee-uh), this is when you have a weak, rough, or harsh voice.

If you have trouble speaking, your healthcare provider's recommendations may include:

- Drinking plenty of water and avoiding irritants (eg, dust, smoke, alcohol, industrial chemicals)
- Writing things down to give your voice a break
- Remembering to avoid shouting or whispering



Constipation

Some patients taking INLYTA® (axitinib) experience constipation during treatment. This has the potential to become a serious side effect. Left untreated, constipation can cause a blockage in your intestines, leading to dehydration and even internal damage.

If you experience constipation, speak to your healthcare provider. He or she may recommend any of the following:

- Drinking more fluids
- Taking a stool softener
- Changing your dose of INLYTA
- Adding fiber to your diet
- Increasing physical activity

Tips to Help Manage Certain Side Effects (cont'd)



Skin conditions

Skin conditions, such as rash, redness, itching, or peeling of the skin, are other side effects that may occur. You may notice dryness, thickening, calluses, blisters, or cracking of the skin on the palms of your hands and soles of your feet. This is called hand-foot syndrome. Tell your healthcare provider if you start to develop skin problems. He or she may give you specific treatments, which may include lotions, moisturizers, or pain medicines.

To help manage the effects of hand-foot syndrome, your healthcare provider's recommendations may include:

- Wearing loose, cotton clothes
- Cleaning hands and feet with lukewarm water and gently patting dry
- Avoiding tight-fitting shoes and jewelry that rub or chafe the hands and feet

Lifestyle choices: More you can do

It's important to maintain a healthy lifestyle. These healthy living tips are general suggestions for anyone fighting cancer. Keep in mind, INLYTA® (axitinib) has not been shown to improve daily activities.



Eat healthy foods

It's important to maintain a healthy weight and eat a well-balanced diet that includes plenty of fruits, fresh vegetables, whole grains, and high-fiber foods.



Balance exercise with rest

You may experience fatigue, but it's still important to stay as active as possible.



Reduce stress

Both the American Cancer Society and the National Cancer Institute agree that it's important to avoid added stressors in your life.

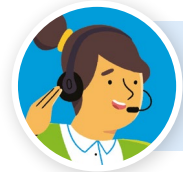
Getting INLYTA[®] (axitinib)

Pfizer Oncology together[™]

Pfizer Oncology Together can help you understand your options for how to obtain your prescribed INLYTA. We can identify a specialty pharmacy that can fill your prescription, based on your insurance plan. Specialty pharmacies provide medicines that might not be available at typical neighborhood pharmacies. Usually a specialty pharmacy will ship your medicine directly to your home.

Support to Help You Access Your Prescribed Medicine

Pfizer Oncology Together is a patient support program that focuses on your individual needs. We help identify financial assistance options based on your insurance coverage. Whether you have insurance through your job or employer, government insurance, or no insurance at all—we're here to connect you with financial support options, at no cost to you, that may help you save on your medicine. We also offer resources to help you understand your health insurance and benefits to help make the process a little easier to understand. When it comes to support, we're in this together.



FOR LIVE SUPPORT

Call **1-877-744-5675** (Monday–Friday 8 AM–8 PM ET)

VISIT

PfizerOncologyTogether.com

Getting INLYTA[®] (axitinib) (cont'd)

Pfizer Oncology together[™]

If needed, we'll help you find financial assistance options for your prescribed INLYTA, regardless of your insurance coverage.

Commercially insured

Resources for eligible patients with commercial, private, employer, or state health insurance marketplace coverage:

Co-pay assistance

Eligible, commercially insured patients may pay as little as \$0 per month for INLYTA, regardless of income. Limits, terms, and conditions apply.* Patients may receive up to \$9,450 per product in savings annually. There are no income requirements, forms, or faxing to enroll.



*Patients are not eligible to use this card if they are enrolled in a state or federally funded insurance program, including but not limited to Medicare, Medicaid, TRICARE, Veterans Affairs health care, a state prescription drug assistance program, or the Government Health Insurance Plan available in Puerto Rico. Patients may receive up to \$9,450 per product in savings annually. **The offer will be accepted only at participating pharmacies. This offer is not health insurance.** No membership fees apply. Pfizer reserves the right to rescind, revoke, or amend this offer without notice. For full Terms and Conditions, please see PfizerOncologyTogether.com/terms. For any questions, please call 1-877-744-5675, visit PfizerOncologyTogether.com/terms or write: Pfizer Oncology Together Co-Pay Savings Program, 2250 Perimeter Park Drive, Suite 300, Morrisville, NC 27560.

Getting INLYTA[®] (axitinib) (cont'd)

Medicare/government insured

Help identifying resources for eligible patients with Medicare/Medicare Part D, Medicaid, and other government insurance plans who expressed financial need:

- We can assist patients with searching for financial support from alternate funding resources, which may include financial assistance through Extra Help, a Medicare Part D Low-Income Subsidy (LIS) program
- If support from alternate funding resources or Medicare Extra Help is not available, Pfizer Oncology Together will see if patients are eligible for the Pfizer Patient Assistance Program,[†] which can provide prescribed Pfizer Oncology medicines for free

Uninsured

Help identifying resources for eligible patients without any form of healthcare coverage:

- We can check patient eligibility for Medicaid and help them understand how to apply
- Patients who do not qualify for Medicaid may receive free medicine through the Pfizer Patient Assistance Program.[†] Patients must be eligible and reapply as needed

[†]The Pfizer Patient Assistance Program is a joint program of Pfizer Inc. and the Pfizer Patient Assistance Foundation[™]. Free medicines from Pfizer are provided through the Pfizer Patient Assistance Foundation[™]. The Pfizer Patient Assistance Foundation[™] is a separate legal entity from Pfizer Inc. with distinct legal restrictions.

Support & Resources



Explore This Is Living With Cancer™

This Is Living With Cancer is a free online resource developed by Pfizer Oncology for all people living with cancer, regardless of age, income, race, location, cancer type or stage of disease. This comprehensive program is available to anyone in the United States, whether they're on a Pfizer treatment or not, with a growing focus on those facing challenges accessing care.

Personalize your support resources

If you or your loved one is looking for specific information, you can create a profile to personalize your site experience. And even if you didn't sign up yet, you can still access over 150 topics including educational materials, cancer planning information, wellness content and more.

Support & Resources (cont'd)

More resources and support for you

Talking with cancer experts and others living with cancer can be a great source of support.

The following list of organizations and resources is provided to help you learn more about cancer and where to tap into patient support services. These websites are neither owned nor controlled by Pfizer. Pfizer does not endorse and is not responsible for the content or services of these sites.

American Cancer Society® (ACS)

(800) 227-2345 | [cancer.org](https://www.cancer.org)

Kidney Cancer Association® (KCA)

(800) 850-9132 | [kidneycancer.org](https://www.kidneycancer.org)

Cancer Hope Network

(877) HOPENET (467-3638) | [cancerhopenetwork.org](https://www.cancerhopenetwork.org)

National Cancer Institute® (NCI)

(800) 422-6237 | [cancer.gov](https://www.cancer.gov)

KCCure

[kccure.org](https://www.kccure.org)

Treatment Checklist

Keep in touch with your healthcare team

This checklist is designed to help you stay organized during treatment. Your healthcare provider can help you complete it.

Healthcare team contact list

Healthcare provider name	Office address	Phone/fax numbers	Email

Specialty pharmacy information

Insurance information

Pharmacy phone	Pharmacy website	Carrier	Carrier website

Treatment Checklist (cont'd)

Record your information

Tell your healthcare provider about all the medicines you take, including prescription and non-prescription medicines, vitamins, and herbal supplements. Talk with your healthcare provider before you start taking any new medicines. Medicines can affect each other, causing serious side effects.

Write down the medicines you currently take

Medicine	Dosage	Schedule	I take this medicine for:

Treatment Checklist (cont'd)

Monitor your blood pressure

Keep track of your blood pressure during treatment. Your healthcare provider should check your blood pressure regularly while you are being treated. If you develop blood pressure problems, your healthcare provider may prescribe medicine to treat your high blood pressure, lower your treatment dose, or stop your treatment. Tell your healthcare provider if you have high blood pressure or a history of heart disease.

If you have high blood pressure, your healthcare provider's recommendations may include:

- Take antihypertensive medications as prescribed
- Recognize signs of potentially dangerous high blood pressure (eg, severe headache, shortness of breath, nosebleeds)
- Follow healthy lifestyle choices: regular exercise, weight control, moderate alcohol consumption, sodium restriction

If you are already being treated for your high blood pressure, your healthcare provider may change your blood pressure medicine when you start a new cancer treatment. Your healthcare provider may also ask you to track your blood pressure regularly. Follow the advice of your healthcare provider—talk to them if you have any questions or concerns.

Record your blood pressure

Date: Time:	/	Date: Time:	/	Date: Time:	/
Date: Time:	/	Date: Time:	/	Date: Time:	/
Date: Time:	/	Date: Time:	/	Date: Time:	/

Your blood pressure should be taken as often as your healthcare team recommends. Use the space above to record your results.

Treatment Checklist (cont'd)

Keep track of your side effects

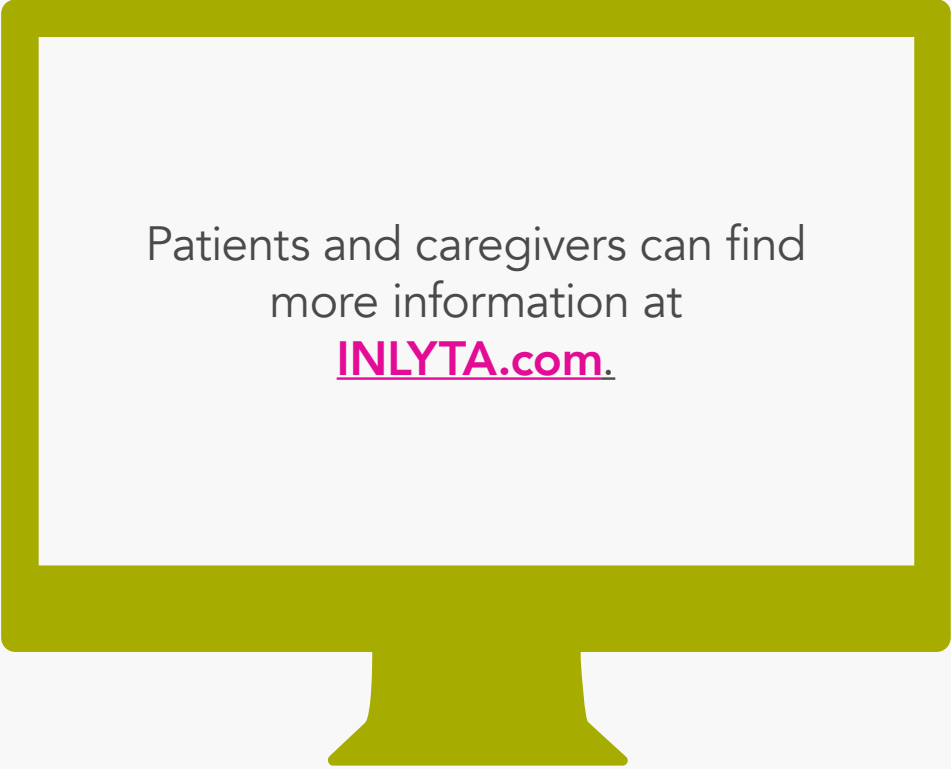
Use this space to record any side effects you experience. Discuss them with your healthcare team as soon as possible, especially if they are severe or persistent.

Side effect description	Date first noticed	Notes (eg, duration, management tips you have tried)

Share your questions with your healthcare team

Have questions about your cancer and its treatment? Record them here.

Remember to take this checklist to your next appointment.



Patients and caregivers can find
more information at
[INLYTA.com](https://www.inlyta.com).



Pfizer Oncology together™

FOR LIVE SUPPORT

Call [1-877-744-5675](tel:1-877-744-5675) (Monday–Friday 8 AM–8 PM ET)
or visit PfizerOncologyTogether.com